



**visio.lign**

The Aesthetic and Functional System

# modern art

*André Kessler*



create & colour  
natural beauty

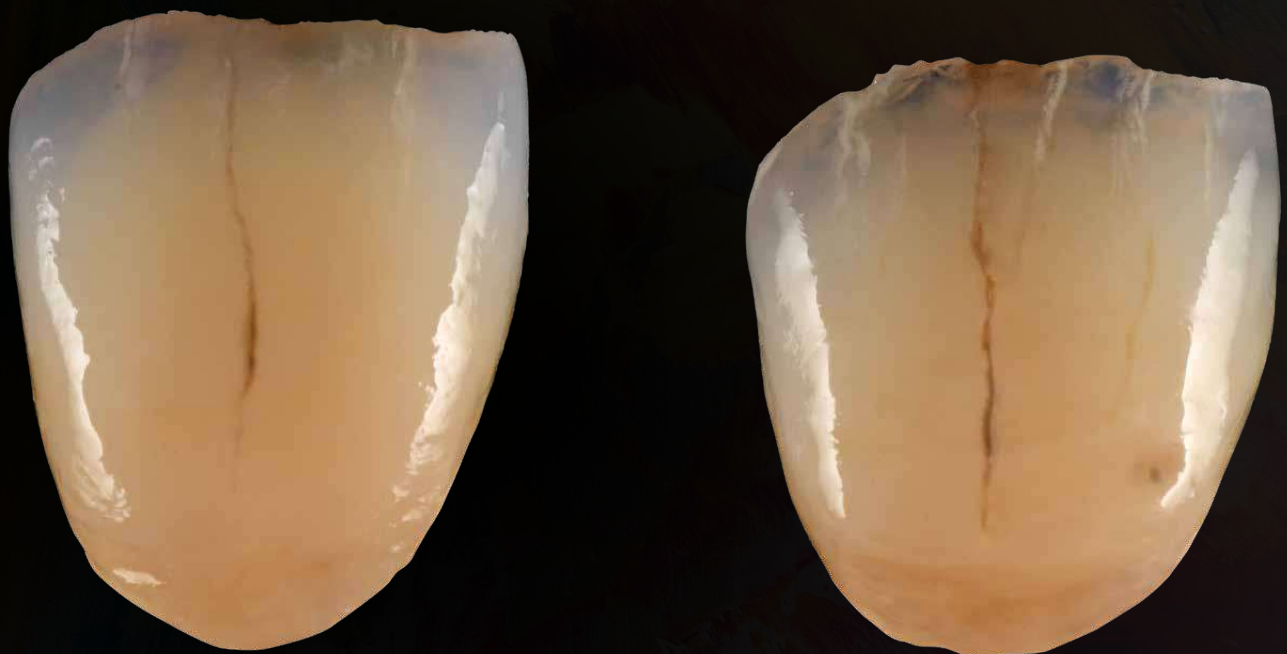
powered by  
**visio.lign**

# Nature as a model



*Natural tooth ageing*





## The four life stages of a natural tooth

The natural ageing of a tooth in its four stages of life can be easily reproduced with the new materials in the modern art system.

The systematised interplay of crea.lign effect materials and visio.lign color paints allows us to reproduce this natural ageing process.

# crea.lign OD

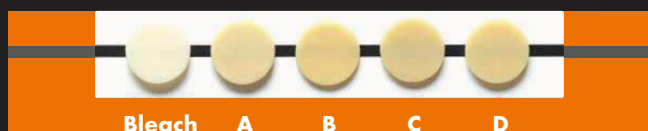
## Opaque Dentin

The crea.lign Opaque Dentin compounds bring chroma and depth effects to composite veneers with reduced wall thicknesses. The chromacity can be easily adjusted in the case of colour variations. Thanks to the compounds' accurate chroma calibration, we have been able to reduce the number of opaque dentin compounds so that only one compound per colour group is required. The OD A to OD D and OD bleach compounds cover the most common colours in order to achieve brilliance and colour fidelity in very small spaces.



### COLOUR ASSIGNMENT TABLE

crea.lign OD	Classic A-D colours
crea.lign Opaque Dentin OD A	A3-A3,5
crea.lign Opaque Dentin OD B	B3
crea.lign Opaque Dentin OD C	C3
crea.lign Opaque Dentin OD D	D3
crea.lign Opaque Dentin OD BL	A1-B1



crea.lign OD A

THE HT

• = crea.lign  
Dentin A3.5

• = crea.lign  
Dentin A3

crea.lign HT 2

crea.lign HT 3

# crea.lign HT

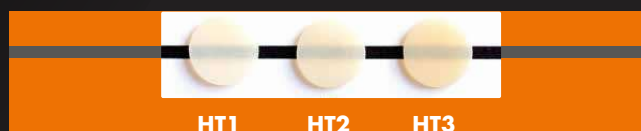
## High Translucent

The crea.lign HT compounds are chromatically attenuated dentin compounds with very high translucency. Thanks to the interplay of this chromatic effect and the high translucency of the compounds, they give the tooth body depth and enable a natural transition from dentin to enamel. Hard transitions can be smoothed out perfectly. crea.lign HT is available in the three variants HT1, HT2 and HT3.



### COLOUR ASSIGNMENT TABLE

crea.lign HT	Classic A-D colours
crea.lign High Translucent HT1	A1 – A2
crea.lign High Translucent HT2	A2 – A3
crea.lign High Translucent HT3	A3 – A3,5



# EFFECT

Finish with  
**crea.lign C.G.S. finish**

Images not to scale. Subject to corrections and changes.



# visio.lign color

## Colour and protection



visio.lign color are light-curing composite paints that can be used to effortlessly achieve colour effects on the surface of a veneer. The visio.lign color colours Body A-D can be used to optimally adjust a veneer's chroma. Furthermore, there is a wide range of visio.lign color paints available for efficient surface characterisation. The visio.lign color paints impress with their colour stability as well as their resistance to discolouration and abrasion. The optimal solution for definitive restorations.

# visio.lign shield

## Gloss and protection

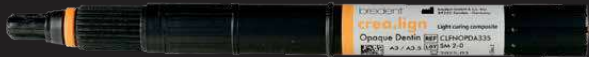


The new visio.lign shield gloss varnish for composite, PMMA and BioHPP allows you to create optimal surface gloss and protection. A surface finished with visio.lign shield gloss varnish acts as an abrasion-resistant protective shield that won't discolour. An optimal result is achieved, especially on hard-to-reach surfaces such as the interdental area, because visio.lign shield is available in two viscosity variants – fluid “LV” and viscous “HV” – to give every user as much flexibility as possible. It takes just a few work steps to achieve a top-class surface gloss. This saves users valuable time compared to the conventional polishing process.

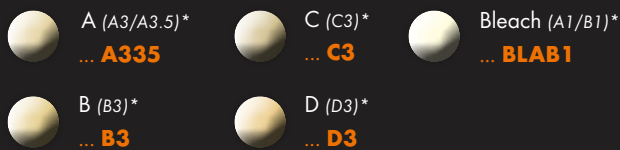
# Product overview

## crea.lign OD

Opaque Dentin Gel, 5 g



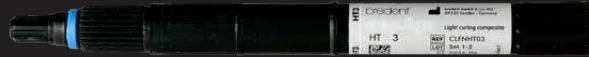
[REF] CLFNOPD ..., e.g. CLFNOPDA335



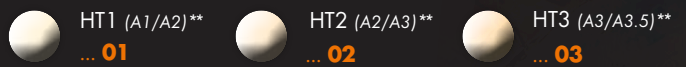
\*crea.lign OD colour assignment table → see page 4

## crea.lign HT

High Translucent Gel, 5 g



[REF] CLFNHT ..., e.g. CLFNHT01



\*\*crea.lign HT colour assignment table → see page 5

## visio.lign color

2.6 ml



[REF] VLCOL ...,  
e.g. VLCOLBODYA



## visio.lign shield

5 ml



LV - Low Viscosity

[REF] VLSHIELDLV5



HV - High Viscosity

[REF] VLSHIELDHV5





Illustration: visio.lign color Set

## visio.lign color Set

16 pieces Aluminium case

### Contents

- 1 x visio.lign shield LV 5ml
- 1 x visio.lign shield HV 5ml
- 1 x visio.lign color Body A 2.6ml
- 1 x visio.lign color Body B 2.6ml
- 1 x visio.lign color Body C 2.6ml
- 1 x visio.lign color Body D 2.6ml
- 1 x visio.lign color Grey-Blue 2.6ml
- 1 x visio.lign color Blue 2.6ml
- 1 x visio.lign color Yellow 2.6ml
- 1 x visio.lign color Brown 2.6ml
- 1 x visio.lign color Olive 2.6ml
- 1 x visio.lign color White 2.6ml
- 1 x visio.lign color Orange 2.6ml
- 1 x visio.lign color Black 2.6 ml
- 1 x visio.lign color Rose 2.6 ml
- 1 x visio.lign color Creme 2.6 ml
- + 1 x crea.lign surface cleaner 30 ml
- + 1 x mixing block
- + 10 x disposable brushes with one brush holder

**REF** VLCOLSET

## visio.lign color Starter Kit

8 pieces Aluminium case

### Contents

- 1 x visio.lign shield LV 5 ml
- 1 x visio.lign shield HV 5 ml
- 1 x visio.lign color Body A 2.6 ml
- 1 x visio.lign color Body B 2.6 ml
- 1 x visio.lign color Grey-Blue 2.6 ml
- 1 x visio.lign color Olive 2.6 ml
- 1 x visio.lign color Orange 2.6 ml
- 1 x visio.lign color Creme 2.6 ml
- + 1 x crea.lign surface cleaner 30 ml
- + 1 x mixing block
- + 10 x disposable brushes with one brush holder

**REF** VLCOLSKIT

# modern art

And Rosh





# The philosophy

"In the past, dental technicians were often forced to go down very complicated paths if they wanted to preserve aesthetics and function. To achieve the desired result, they often had to search for alternative materials and deviate from the specified protocols. Thanks to ongoing research, the materials are becoming more and more sophisticated and allow us to achieve excellent aesthetic and, in particular, biofunctional results. Reliable protocols and materials, like those that make up the modern art system, are essential for ensuring an optimal result with minimal effort. The world of dental technology is constantly changing. This is making it easier for us in many aspects and at the same time fascinating."

- DT Andrea Foschi -

## DT Andrea Foschi

**DT Andrea Foschi was born in Ravenna on 26 March 1976. He graduated from Villaggio del Fanciullo in Bologna in 1997 and was already the owner of a dental laboratory in 1998.**

He developed a passion for metallurgy by attending courses at Wieland and Ivoclar. He also started his training in aesthetics by attending Michel Magne's master's course in aesthetics.

The art of photography had always been another passion of his. Foschi also brings this dedication and knowledge to the field of dental technology.

In 2004, he started to focus his attention on metal-free materials, including zirconium and disilicate. In 2008, he recognised the importance of gnathology, drawing on the philosophy of Prof. R. Slavicek. He attended the basic and advanced courses for gnathology run by Dr. Giuseppe Cuman as well as Claudio Nannini's modelling course – he still applies the methods he learned there in his day-to-day work. He attended further courses with internationally renowned speakers such as Roberto Bonfiglioli and Gerald Ubassy.

Mr Foschi is the creator and developer of the C.G.S. (Customised Guided System) protocol for shape-controlled layering of composites on all types of structural substrates. He has also been instrumental in the development of the modern art system and the associated materials.

He organises and teaches courses in dental photography for both dental technicians and dentists, and also teaches courses in C.G.S. coating for composite, infiltration, and zirconia staining. Andrea Foschi also teaches courses on the reproducibility of natural teeth using the new materials in the modern art system.







**visio.lign**

The Aesthetic and Functional System

layering



**crea.lign**

staining



**visio.lign color**

**bredent**  
group

0091161GB-20230703  
Mistake and subject to change reserved

